

# 2008

## ONEIDA COUNTY SEWER DISTRICT

Permit Compliance and Sanitary Sewer Overflow Abatement Project

# Annual Progress Report for 2008



*Presented by OCSD Steering Committee*

**W**e are pleased to present this annual progress report which summarizes the activities of Oneida County and its project consulting team during the past year, and highlights the contributions of the Steering Committee in achieving critical project milestones mandated by the New York State Department of Environmental Conservation's (NYSDEC's) Consent Order.

As we continue to analyze and study this complex issue, we are discovering that there are many challenges, seen and unforeseen, that lie ahead for Oneida County, the individual towns and villages that comprise the Sewer District, and the residents of those communities. These challenges stem from an aging and deteriorating sewer infrastructure that must be rehabilitated in order to bring the County and the Sewer District into compliance with state and federal environmental and water quality regulations.

We believe it is important for those impacted by the Consent Order to understand that the County's non-compliance resulted primarily from a change in language by the Environmental Protection Agency (EPA) that redefined the type of permit the Sewer District holds for discharging overflow storm water from the Sauquoit Creek Pumping Station into the Mohawk River. Although the state of the Sewer District's aging infrastructure had been an ongoing concern for some time, the County was never found to be in violation of any laws or environmental regulations prior to this unexpected change.

## **Accelerated schedule**

While Oneida County was aware of, and had every intention of addressing these infrastructure issues in order to meet its environmental and public health and

safety obligations, it also realized that to do so would be costly and would need to take place over a period of time. The strict terms of the Consent Order that was issued in July of 2007 suddenly accelerated and compressed that repair schedule significantly and imposed on the Sewer District and its member communities a formidable financial burden that ordinarily would be lessened with federal and state financial assistance. However, due to the extraordinary economic climate that currently exists nationally, statewide and locally, that financial assistance has now become increasingly unreliable.

## **A community-wide issue**

Recognizing that this is a sewer district-wide community issue, we have been brought together under the leadership of County Executive Anthony Picente to provide citizen input, strategic direction, and project oversight to the consulting team. There is now a forum and process in place that provides for the exchange of information and ideas among project consultants, county and municipal leaders, and residents of communities affected by the Consent Order. It is this dialogue, along with a sense of community and spirit of cooperation, that hopefully will lead to the development of workable solutions.

Although the project is still in its early stages, we are encouraged by the progress we have made in our first year. We are fully committed to the success of this project and will continue to work diligently and cooperatively to meet our obligations and those of the Oneida County Sewer District so that the environment and the public's health and safety are rightfully protected.

— *The OCSD Steering Committee*

## Sewer Abatement Project at a Glance

- Mandated by DEC-issued Consent Order.
- Abatement of wet weather sanitary sewer overflows at the Sauquoit Creek Pumping Station that discharge to the Mohawk River.
- Overflows are a result of an infusion of excess inflow and infiltration (I/I), which is clean surface or ground water, into the sanitary sewer system.
- Excess I/I is a result of faulty and/or deteriorated sanitary sewers and manholes, as well as catch basins connected to the sanitary sewers. Also caused by connection of private property foundation drains, roof leaders, sump pumps and leaky sewer laterals to the public sanitary sewers.
- Multi-year, multi-phase rehab and repair project to aging sanitary sewers throughout the Sewer District.
- Engineering investigations, data collection, analysis, remedial plan development and implementation.
- Presently unknown cost; initially estimated at \$66 million.

**T**his is a multi-year infrastructure evaluation and improvement project being undertaken by the Oneida County Sewer District (OCSD). The project results from the settlement of an enforcement action brought about by a NYSDEC Consent Order requiring that OCSD's operating permit and sewer system, which includes individual sub-systems belonging to member municipalities, be brought into compliance with current federal and state regulations.

The Consent Order pertains primarily to wet weather sanitary sewer overflows at the Sauquoit Creek Pumping Station service area that discharge into the Mohawk River. It includes a schedule of project tasks and deadlines for completion.

The situation involves an infusion of excessive storm-related flow and groundwater into the sanitary sewer system which results in the sewer system overflowing beyond its capacity during periods of heavy rainfall and winter snowmelts. The problem of wet weather discharges from municipal sewers is national in scope. Many communities across the entire United States with aging infrastructures, like those found here in Oneida County, are experiencing similar problems.

In addition to conducting comprehensive engineering studies to determine the extent and nature of the repairs, the ultimate goal of this project is the removal of excess storm- and groundwater-related flow from the sanitary sewer system. Examples of these sources include aging and failing municipal sewers, leaking private sewer laterals, and the connection of private property roof leaders, gutters, foundation drains and sump pumps to the sewer lines.

By removing excess flow from the sanitary

sewer system, wet weather overflows from the Sauquoit Creek Pumping Station will be reduced and ultimately eliminated. In addition, capacity in the existing sanitary sewers will be freed up to accommodate future development. This will also minimize the amount of storm water that must be treated at the Oneida County Water Pollution Control Plant. Removal of excess storm and groundwater will improve the capacity of the treatment plant and reduce operating costs as well.

The project consulting team includes specialized sanitary engineers, legal and

financial advisors, and public information specialists. This team includes the following consultants:

**Engineering**

Shumaker Consulting Engineering  
Stearns & Wheeler  
Brown and Caldwell

**Financial**

Fiscal Advisors, Inc.

**Legal**

Bond, Schoeneck and King

**Public Information**

Paige Marketing Communications Group, Inc.

The consulting team meets regularly with the sewer district's Steering Committee to gather and share information, make recommendations, and provide progress and status reports over the duration of the project.

Project management and implementation is overseen by Oneida County Department of Water Quality and Water Pollution Control, led by Commissioner Steven Devan, P.E. and his staff, who are responsible for coordinating all technical aspects of the project. This includes working directly with the project consulting team.

**T**he Steering Committee is an integral part of the remediation process and its role and responsibilities are critical to the sewer district achieving successful compliance with Consent Order mandates.

The committee is comprised of the Oneida County Sewer District's Advisory Board, which includes the chief elected officials, or their designees, from each of the 12 member municipalities that form the Sewer District, as stipulated in the original articles of formation of the district. In addition, the chief elected official from each of the three communities served by intermunicipal agreements are also members of the Steering Committee.

The committee also includes one community representative from each municipality, designated by that municipality's chief elected official, as well as two rotating at-large seats appointed by the County Executive. The criteria used to select committee members included a sufficient knowledge, interest, and expertise to contribute to the project oversight process.

The Steering Committee's responsibilities include strategic oversight, maintaining project focus and direction, and ensuring that the project meets defined goals, requirements and deliverables in a timely and cost-effective manner. One especially critical role of Steering Committee members includes serving as community liaisons to share current project information with their municipal boards, residents and businesses throughout the project area.

Since its formation in November 2007, the committee has convened monthly to discuss such issues as:

- Infiltration/Inflow (I/I) Offset Plan implementation
- Establishment of flow credit bank and fee structure
- Private property I/I removal and inspections
- Sewer use ordinance revisions
- Financing project costs

The Steering Committee was recently separated into four distinct work groups to more closely examine and address the technical, legal, financial and public



## Oneida County Sewer District Steering Committee

Front row (from left): Ken Schaaf, Richard Pugh, Bruce Brodsky, Deb Day, Carson Sorrell, Harvey Yando, Joseph Urban. Second row: Roger Cleveland, Christine Krupa, Ken Dodge, Don Bathke, James Hogel. Back row: Mike Steiger, Chris Burtch, Don Ryan, Tony Leone, Rob Maciol, Peter Gaige.

Missing from photo: Nancy Shepard, Scott Mahardy, Peggy Boshart, Brian Scala, Keith Shuderer, Earl Reed, Scot Owens, Michael Bailey, Don Rothdiener, Mick O'Connor, Felix Cardillo, Joe Lazenby, Charles Tritten, Chuck Gibbs, Bill Schmitt, Bruno Petrucione, Joe Kinney, Michael Bennison, David Wilcox, Sal Granato.

information aspects of the project. These work groups will provide recommendations and approaches to the full committee that in turn will be given consideration as possible solutions by the project consulting team.

The project consulting team has held occasional webcasts and workshops for committee members and the local sewer system operators to familiarize them with some of the issues surrounding project tasks and milestones. To date, the consulting team has hosted webcasts on private property I/I removal and sewer system capacity management, operations and maintenance (CMOM).

## Steering Committee Members

<b>Village of Clayville:</b>	Nancy Sheppard*, Mike Steiger♦
<b>Town of Deerfield:</b>	Scott Mahardy*, Peggy Boshart†
<b>Town of Frankfort:</b>	Joseph Kinney*
<b>Village of Holland Patent:</b>	Michael Bennison*, David Wilcox†, Peter Gaige♦
<b>Town of Marcy:</b>	Brian Scala*, Keith Schuderer†, Carson Sorrell♦
<b>Town of New Hartford:</b>	Earle Reed*, Roger Cleveland†, Scot Owens♦, Christine Krupa♦
<b>Village of New Hartford:</b>	Donald J. Ryan*, Don Bathke†, John Grygiel♦
<b>Village of New York Mills:</b>	Robert Maciol*, Joseph Urban†, Michael Bailey♦
<b>Village of Oriskany:</b>	Don Rothdiener*, Mick O'Connor†
<b>Town of Paris:</b>	Felix Cardillo*, James Hogel♦
<b>Town of Schuyler:</b>	Kenneth Dodge*
<b>City of Utica:</b>	David Roefero*, Deb Day†, Mike Mahoney†
<b>Village of Whitesboro:</b>	Richard Pugh*, Charles Tritten†, Joe Lazenby♦
<b>Town of Whitestown:</b>	Charles R. Gibbs II*, Sal Granato†, Bill Schmitt♦
<b>Village of Yorkville:</b>	Bruno Petrucione*, Anthony C. Leone, Jr.†, Ken Schaaf♦
<b>Oneida County:</b>	Bruce Brodsky♦, Harvey Yando♦

\*-Elected Official, †-Alternate, ♦-Delegate

**A** significant amount of work has been accomplished in a relatively short period of time as the county works toward compliance with the requirements of the Consent Order.

This has required a strong team effort among staff from Oneida County Department of Water Quality and Water Pollution Control, Oneida County Department of Planning, Herkimer-Oneida County Comprehensive Planning Program, local municipalities, and the county's engineering consultant team.

The following is a summary of activities and accomplishments that have been completed to date:

- Revisions to the Oneida County Sewer Use Rules and Regulations.
- Implementation of an Inflow/Infiltration Offset Plan.
- Construction of an Environmental Benefit Project (trail head parking at BOCES for the Rayhill Trail).
- Development of project website hosted by Oneida County.
- Preparation and submission of a Flow Management Plan.
- Preparation and submission of a Wet Weather Operating Plan.
- Preparation and submission of a Water Pollution Control Plant Capacity Study.
- Preparation and implementation of an OCSD-wide Sewer Overflow Response Plan.
- Preparation and submission of a Temporary Treatment Alternatives Plan – Sauquoit Creek Pumping Station Overflow.

- Preparation and submission of an Interim Inflow/Infiltration Reduction Plan.
- Completion of an extensive six-month flow metering program on the major trunk sewers within the OCSD sewer service area.
- Completion of several weeks of extensive late night sewer inspections and flow observations.
- Implementation of an extensive manhole inspection program throughout the sanitary sewer system tributary to the Sauquoit Creek Pumping Station.

In addition, Oneida County completed extensive project background work in support of current and future project activities. This work included:

- GPS mapping of the OCSD interceptor sewers throughout the district service area.
- GPS mapping of the municipal sanitary sewers tributary to the Sauquoit Creek Pumping Station.
- LiDAR aerial mapping of the entire OCSD sanitary sewer service area.
- Purchase and installation of computer hardware and database software to store and process all data generated by this project.

All NYSDEC-mandated submissions to date have met the required deadlines as stipulated by the Consent Order.

## Engineering Field Work

A major effort has been made by the County and its engineering consulting team

over the past several months to conduct physical evaluations and flow metering within the sanitary sewer system. An overview of that effort is described below:

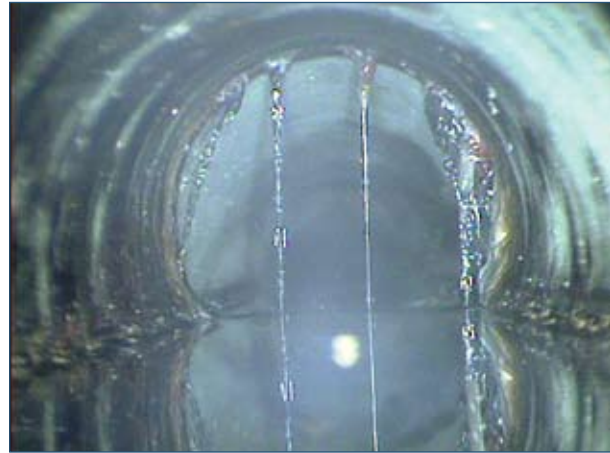
## *Flow metering*

Flow meters were installed on the OCSD interceptor sewers and on primary municipal trunk sewers at their connection points to the OCSD interceptor sewers. A total of 35 meters were installed on sewers tributary to the Sauquoit Creek Pumping Station where persistent sanitary sewer overflows triggered the issuance of the Consent Order.

In addition, 17 meters were installed on OCSD and municipal sewers outside of the project area in order to monitor total system flow directed toward the Water Pollution Control Plant. Additionally, five rain gauges were installed at strategic locations across the OCSD service area in order to monitor precipitation during the flow metering period. This flow metering effort was conducted over a six-month period (March – September 2008).

## *Late night inspections*

Not all community sewer connections were monitored through continuous flow metering. Sewer connections to the district's interceptor sewers from smaller communities tributary to sewer areas were not monitored by continuous flow metering equipment. In those areas, it was determined to be more cost effective to assess inflow/infiltration (I/I) potential by visually inspecting those sewer connections at night when sanitary sewage flow is expected to be at a minimum. These nighttime inspections provided an indication of the amount of I/I. Estimates of flow rate and observations of wastewater strength were made during these inspections through the use of handheld flow metering equipment.



Leaking pipe joint.

## *Groundwater gauge installations and monitoring*

The engineering team installed nine groundwater gauges. Groundwater levels in the Sauquoit Creek, Mud Creek, and North and East Utica drainage basins were measured using piezometer-type tubes installed within manholes in the District's interceptor sewers. Groundwater measurement locations were chosen to represent the upper, middle, and lower reaches of the drainage basins. The groundwater monitoring period corresponded to the six-month flow metering period. As part of the data analysis being performed by the engineering team, the collected groundwater level data will be correlated to sewer flows.

## *Stream elevation monitoring*

The engineering team regularly measured stream elevations at seven predetermined locations. Specifically, stream stage level (i.e., water surface elevation) in Sauquoit Creek and Mud Creek was measured from relative datum established on bridges that cross the creeks. Stage measurement locations were chosen to represent the upper, middle, and lower reaches of the creeks. Stage level in the Mohawk

River was measured from relative datum established at the outfall of the Railroad Interceptor. The stream elevation monitoring period corresponded to the six-month flow metering period. As part of the data analysis being performed by the engineering team, these relative stage levels will be correlated to sewer flows.

## *Manhole inspections*

In support of the Engineering Team's ongoing efforts to assist Oneida County in complying with the terms of the Consent Order, physical inspections of Oneida County Sewer District-owned sewer infrastructure, including selected pipe segments and manholes of Municipality-owned sewers, were initiated in June of 2008.

The purpose of the inspections was twofold. First, collected data will be used to construct a hydraulic model of the entire sewer system. The hydraulic model will be a valuable tool in evaluating the probable effectiveness of proposed repair and rehabilitation projects. The second purpose of the manhole inspection program was to identify significant sources of infiltration and inflow (I/I) entering the system through defective manholes. Defects in manholes are generally the easiest to identify and least costly to repair when compared to pipeline deficiencies.

### ► *Manhole Inspection Methodologies*

The manhole inspection program began in June 2008. Engineers utilized industry standards to electronically collect and document data in a consistent manner. Two trained teams of engineers and technicians conducted the inspections. Basic information such as system owner, manhole location, and manhole component materials were recorded along with identified defects, including structural, maintenance-related, and sources of inflow and/or infiltration. That



information, along with digital photographs, is stored in a project database.

### ► *Inspection Areas*

Through October 2008, the engineers inspected approximately 1,500 manholes within the area tributary to the Sauquoit Creek Pumping Station. The Oneida County Sewer District interceptor sewers inspected included the Sauquoit Creek Interceptor, Mud Creek Interceptor, Harts Hill Interceptor, Airport Interceptor, Whitesboro-Oriskany Interceptor, and the Yorkville Interceptor. Every accessible manhole within those interceptor sewers was inspected.

Additionally, selected manholes along sewers within the municipalities tributary to the SCPS have been, or will be, inspected. These inspections concentrated on manholes that lie on main trunk sewers and upstream of the flow metering locations. Inspection locations were expanded as needed when excessive flow and/or I/I conditions were detected.

To date, designated portions of the Villages of Whitesboro, Yorkville, New York Mills and New Hartford, as well as designated portions of the Towns of Whitestown and New Hartford, have been inspected, for a coverage rate of between 30% and 85%. The Town of New Hartford is currently being inspected and the Town of Paris and the Villages of Oriskany and Clayville will be inspected later in the year.

## EXAMPLES OF INFLOW/ INFILTRATION (I/I) SOURCES

As a result of inspections and public education efforts conducted throughout the Oneida County Sewer District, some sources of infiltration and inflow have been identified and removed. A few examples are illustrated below.

### *Sump Pump Removal*

This sump pump was disconnected from the sanitary sewer system by the property owner in October 2008. The cost to disconnect this pump from the sanitary sewer system and re-direct the flow to a road side ditch was approximately \$2,500. This small project removed 7,200 gallons per day (gpd) of flow from the sewer system during wet weather conditions, generating 1,440 gallons of equivalent flow credits under the Inflow/ Infiltration Offset Plan.



### *Manhole Rehabilitation*

This brick manhole was rehabilitated in May 2008. The manhole was sealed with a coating of cement, thus preventing approximately 1,500 gpd of groundwater from entering the manhole through the leaky brick wall and through the pipe connections at the manhole. The cost of this rehabilitation was approximately \$1,000, and it generated 300 gallons of equivalent flow credits.



## USEFUL TERMINOLOGY

Inflow and infiltration (I/I) are terms used to describe the ways that groundwater and storm water enter into dedicated sanitary sewer systems. Dedicated sanitary sewers are underground pipes located in the street that are designed strictly to transport wastewater from sanitary fixtures inside a home or place of business to a wastewater treatment system. Sanitary fixtures include toilets, sinks and showers.

**Inflow** is stormwater that enters into sanitary sewer systems at points of direct connection to the systems. Various sources contribute to inflow, including footing/foundation drains, roof drains or leaders, downspouts, drains from window wells, outdoor basement stairwells, drains from driveways, groundwater/basement sump pumps, catch basins, and even streams. These sources are typically improperly or illegally connected or directed to sanitary sewer systems.

**Infiltration** is groundwater that enters sanitary sewer systems through cracks and/or leaks in the sanitary sewer pipes or manholes. Groundwater can enter these cracks or leaks wherever sanitary sewer systems lie beneath water tables or the soil above the sewer systems becomes saturated. These sources are typically caused by age-related deterioration, loose joints, poor design, installation or maintenance errors, damage, or root intrusion.

## Pipe Repair

This cracked pipe was discovered during recent sewer system inspections. A significant amount of groundwater was entering the sewer through the crack. A cured in-place sleeve was installed on November 5 to repair the crack and to seal out approximately 6,000 gpd of infiltration. The estimated cost for this repair was \$2,500 and it generated approximately 1,200 gpd of equivalent flow credits.



## Surface Water Source Removal

This municipal sanitary manhole was found to be constructed in a low-lying area and fitted with a catch basin grate to accept runoff. After the municipality was notified about this defect, it removed the grate, added additional course of brick to the manhole, and installed a new cast iron frame with solid cover. The estimated cost for this project was \$750 and it removed approximately 19,500 gpd of stormwater and generated 3,900 equivalent flow credits.



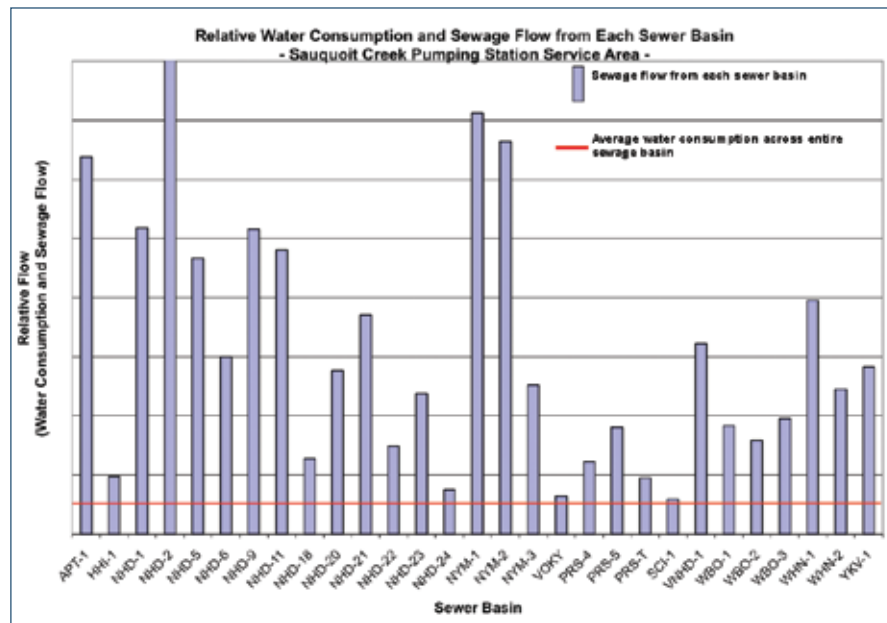
## Public information activities for 2008

The highest priority in 2008 has been establishing a structure and process for stakeholder involvement and oversight. The sewer district problem is particularly complex as it involves the county, member municipalities, and private homeowners and businesses. Communication has focused on identifying and explaining the legal, technical, and financial challenges presented by the DEC Consent Order. Of critical importance has been determining ways to work cooperatively and understanding the need for full participation in solving this serious problem. Activities have included:

- Establishment of a 32-member Steering Committee comprised of elected officials and community delegates. The committee meets monthly with additional working group meetings as needed.
- Development of project information including requirements of the DEC Consent Order, overview of the problem sources of fresh water entering the sewer system, and reports of engineering activities to identify the specific sources and scope of the problem. This information is regularly posted on the OCSD website and distributed to municipalities through newsletters and other vehicles.
- Project updates to County, state and federal elected leadership, media and other stakeholders.
- Meetings with municipal leaders and sewer operations personnel to share and interpret collected field data.
- Communications with planning boards/ codes enforcement on implementation of I/I Offset Plan.
- Information for homeowners explaining how storm water flowing from private residences contributes to the sewer overflow problem.
- Neighborhood meeting on private property sewer connection assessment pilot program.

## Flow Metering Data Summary

The physical evaluation of the sewer system that was conducted during this past year has yielded significant data that will be used as the first steps toward developing a sewer system rehabilitation program. Following is a summary of the sewer system data that has been collected to date.



## Manhole Inspection Summary

The continuous flow metering effort confirmed that there are sources of infiltration and inflow throughout the entire Sauquoit Creek Pumping Station Basin and that some sewer areas contribute more infiltration and inflow than others. The chart above shows water consumption compared to sewage flow on a relative basis.

The horizontal line represents average water consumption across the entire study area. The vertical bars represent sewage flow from each of the metered sewer areas in the Sauquoit Creek Pumping Station Basin. Each of the vertical bars is greater than the water consumption line, which means that each sewer area is sending more sewage flow to the pumping station than the water consumed in the area. This difference is infil-

tration and inflow. This chart also shows that some sewer areas send more infiltration and inflow to the pumping station than other sewer areas. The sewer areas that send more infiltration and inflow to the pumping station are generally the areas that are a lower elevation and/or have older sewers.

Interim Manhole Inspection Summary Table				
Sewer System Owner	Total Length of Sewers* (Miles)	Total Number of Manholes*	Total Number of Manholes Inspected	Total Number of Defects**
Oneida County Sewer District	30	409	404	734
Village of Clayville	3	68	***	***
Town of New Hartford	92	2200	279	253
Village of New Hartford	9	186	107	130
Village of New York Mills	13	284	240	485
Village of Oriskany	9	148	***	***
Town of Paris	15	363	***	***
Village of Whitesboro	9	231	104	222
Town of Whitestown	31	743	201	269
Village of Yorkville	9	224	144	304
<b>TOTAL*</b>	<b>220</b>	<b>4856</b>	<b>1479</b>	<b>2397</b>
*Quantity within the Sauquoit Creek Pumping Station sewer area				
**Quantity reflects one or more defects at the same manhole				
***Data for the Town of Paris and Village of Clayville and Oriskany not yet available				

[Through 10/31/09]

**E**liminating the overflow at the Sauquoit Creek Pumping Station presents technical and financial challenges that will need to be tackled from multiple fronts. This will require a cooperative effort among government leadership and sewer system users. While progress has been made during this first year, there is still much work that needs to be done before a final workable solution is found, including:

### **Continuation and expansion of the physical evaluation of the sewer system**

- ongoing manhole inspection program.
- sewer system cleaning and televising program in order to identify pipe deficiencies that are contributing to the I/I problem.
- smoke testing program to identify sources of direct storm water connections to the sanitary sewers.

**National studies indicate that 50 percent or more of a community's inflow/infiltration may come from private property sources.** Examples of these private property sources include roof leaders, sump pumps, and foundation drains connected to sanitary sewer laterals. Such connections are not permitted under the Oneida County Sewer Use Rules and Regulations as well as local municipal sewer use laws. Over the next year, municipal representatives may need to initiate home/business sewer connection assessments in order to identify areas where provisions need to be made for property owners to reconnect their storm water discharges from the sanitary sewer system to an appropriate storm water system.

**Engineers will create a computer model** to analyze wastewater flow through the existing trunk sewers tributary to the Sauquoit Creek Pumping Station. Flow



metering data, information obtained during the field inspections, and other data will create the basis for that model. The model will be used to assess how well the sewer system is working today at conveying wastewater to the pumping station under various dry and wet weather conditions. The model will identify bottlenecks in the sanitary sewer system and will be used to predict how the sewer system will work in the future, once I/I sources are removed.

**As sewer system defects are identified** during the study phase of this project, it is critical that municipal sewer system owners begin to perform the necessary repairs. This process begins with appropriate municipal budgeting targeted specifically for small sewer system repairs, particularly those that can be done using municipal personnel and resources or as small projects bid to local contractors. Every repair, regardless of the size, will provide some benefit by removing I/I from the sewer system.

### *Financing Strategies*

The cost of repairs to the sanitary sewer systems will undoubtedly be significant. Of particular concern to the Steering

Committee is how these costs will impact the local communities that comprise the district and the tax/rate payers.

The Steering Committee has already begun working with financial and legal advisors to identify financing options and strategies. It is clear that undertaking a repair and rehabilitation program of this magnitude will require a creative combination of local, state and federal funding sources. Support from state and federal elected officials is critical.

Over this next year, the Steering Committee will continue to review alternatives, meet with state and federal officials, and develop the structure for a financing plan.

### *Public Information*

The project's public information consultants have spent the past year educating elected officials, Steering Committee members and the general public about the scope and magnitude of the project and identifying



the legal, fiscal and technical challenges associated with it. The consultants will continue supporting these activities in 2009 and will play an active role in sharing project information, status and progress with the media, legislators, stakeholders and the public.

## Public information activities for 2009

- Editorial board meetings with local and regional newspapers
- Speaker's bureau
- Media relations and editorial placements/opportunities
- Community/stakeholder meetings
- Press releases and project feature articles
- Guest editorials, letters to editor and Op-ed pieces as necessary
- Legislative briefings
- Interface with Associations of Counties/Towns on enabling legislation that will facilitate project funding
- Content for county and municipal newsletters and websites
- Notifications, collateral as needed
- Press conferences as needed
- Special events
- Public service announcements
- Webcasts
- Media tours
- Fact sheets

## Long-Term Sewer District Structure

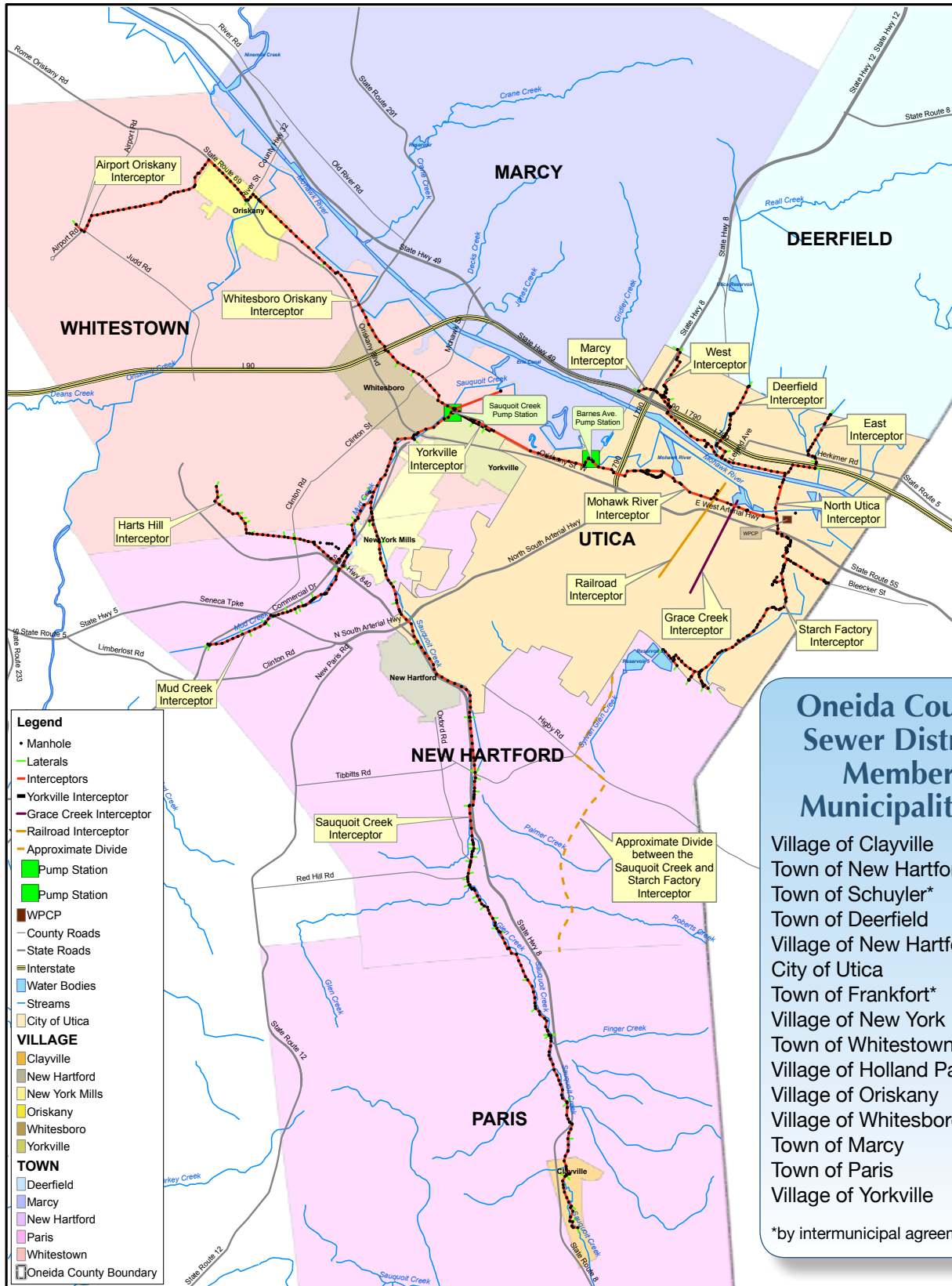
In the past year, members of the Steering Committee have gained a great deal of knowledge about the local sewer systems and their operation. Historically, the general perception with respect to all buried infrastructure, including sanitary sewers, has been "out of sight, out of mind." Recognizing that this mindset must be changed in response to recent circumstances, the Steering Committee will begin evaluating the future structure, ownership and operation of the current sewer system. This evaluation will include discussion on such topics as:

- Status quo (no longer acceptable)
- Shared municipal services
- Operations and Maintenance (O&M) considerations
- Expanded Oneida County Sewer District role
- Alternatives to the current sewer system operational structures

**E**ven with the progress that has been made and the initial groundwork that is in place as the project enters its second year, there are still many unanswered questions and unresolved issues for the Steering Committee and the project consulting team to address.

Among the topics and activities being considered for Steering Committee discussion and evaluation in the next year are:

- District and system ownership and structure
  - Project cost and funding mix
  - Flow quotas for member municipalities
  - CMOM programs
  - Additional sewer connection assessments
  - Government/legislative/regulatory affairs
  - Inflow/Infiltration disposal options
  - Community outreach and public information
- 
- Project prioritization
  - Offset credit program
  - Community impacts and equitable approach to resolving the consent order issues



**Legend**

- Manhole
- Laterals
- Interceptors
- Yorkville Interceptor
- Grace Creek Interceptor
- Railroad Interceptor
- Approximate Divide
- Pump Station
- Pump Station
- WPCP
- County Roads
- State Roads
- Interstate
- Water Bodies
- Streams
- City of Utica

**VILLAGE**

- Clayville
- New Hartford
- New York Mills
- Oriskany
- Whitesboro
- Yorkville

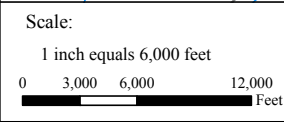
**TOWN**

- Deerfield
- Marcy
- New Hartford
- Paris
- Whitestown
- Oneida County Boundary

**Oneida County Sewer District Member Municipalities:**

- Village of Clayville
- Town of New Hartford
- Town of Schuylers\*
- Town of Deerfield
- Village of New Hartford
- City of Utica
- Town of Frankfort\*
- Village of New York Mills
- Town of Whitestown
- Village of Holland Patent\*
- Village of Oriskany
- Village of Whitesboro
- Town of Marcy
- Town of Paris
- Village of Yorkville

\*by intermunicipal agreement



**ONEIDA COUNTY, NY  
OCSD Service Area  
FIGURE 1-1**

J:\GIS\OneidaCounty\Maps\Figure1-1 12-3-07-Interceptor and Laterals 11x17 Portrait.mxd